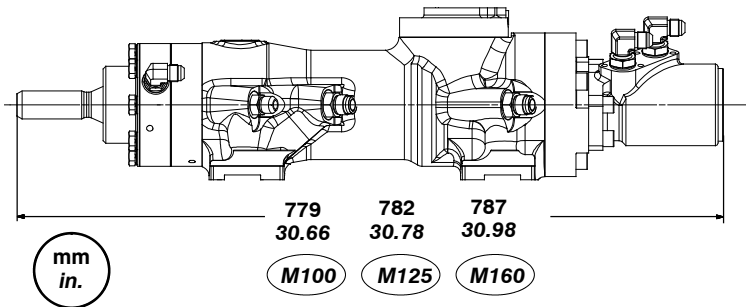
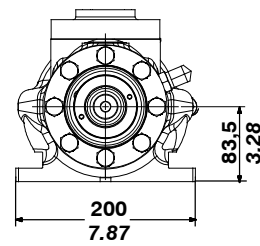
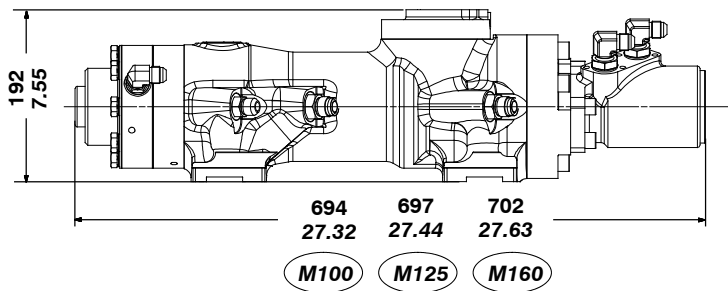


## HC25 ...M100..W.. ...M125 ...M160



Strike flow	l/mn	GPM	55 – 65			14 – 17		
Strike pressure	bar	PSI	110 – 150			1600 – 2150		
Strike frequency	Hz	BPM	55 – 65			3300 – 3900		
Energy per blow	J	ft-lb	110 – 150			81 – 111		
Rotation motor			M100	M125	M160	M100	M125	M160
Rotation flow maximum	l/mn	GPM	30	37,5	48	7,9	9,9	12,6
Rotation pressure maximum	bar	PSI	140			2031		
Rotation torque maximum	Nm	ft-lb	205 – 250 – 320			152 – 185 – 236		
Rotation speed setting	t/mn	RPM	180 – 300			180 – 300		
Water flushing pressure	bar	PSI	10 – 15			140 – 215		
Water flushing flow	l/mn	GPM	20 – 30			5.3 – 8		
Air flushing pressure	bar	PSI	6 – 10			86 – 145		
Air flushing	m3/mn	CFM	3			105		
Front guide lubrication pressure	bar	PSI	1			15		
Front guide lubrication air flow	l/mn	GPM	200			53		
Front guide lubrication oil			6 drops/mn			6 drops/mn		
Rod type – male/female	mm	in	R32			R32		
Recommanded feed force	daN	lbf	600 – 750			1350 – 1690		
Accumulator nitrogen pressure	bar	PSI	35			508		
Accumulator volume	cm3	inch3	127,5			7,8		
Oil viscosity	cSt	cSt	ISO VG 32 / ISO VG 46			ISO VG 32 / ISO VG 46		
Oil temperature	°C	°F	40 to 60			104 to 140		
Air and Water flushing temperature	°C	°F	5 to 40			41 to 104		



Please consult us before using specific oil (non-inflammable, biodegradable, ...).