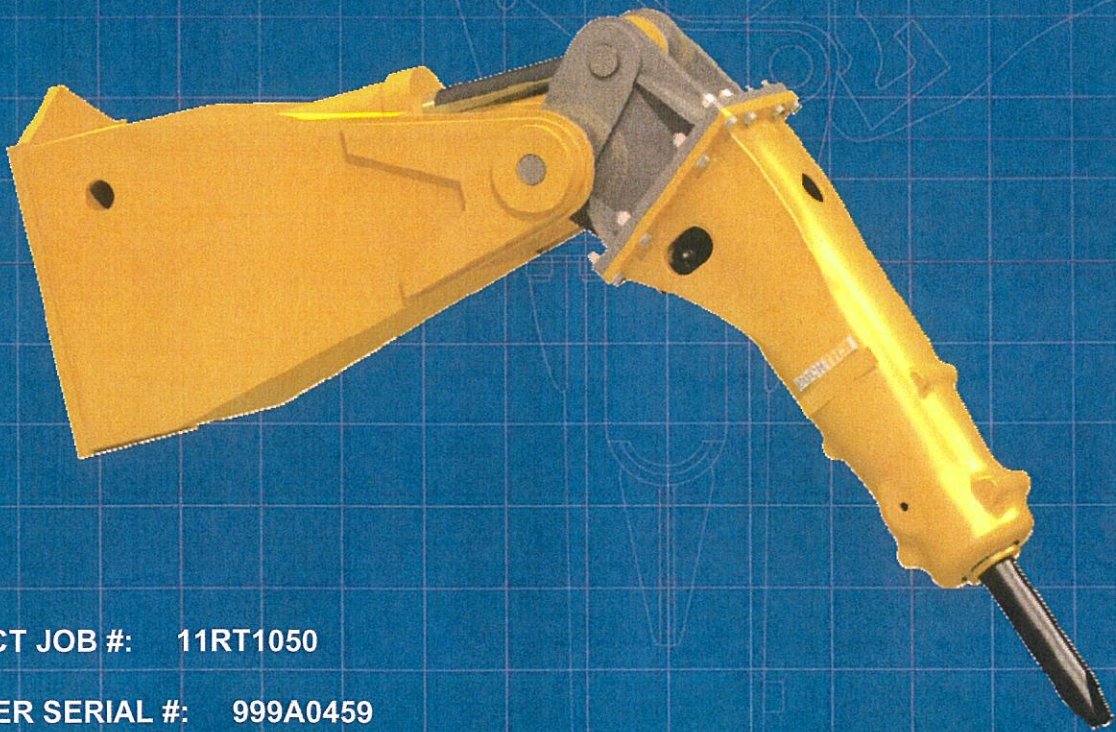


RHINOTM

RTSB1250

PARTS & SERVICE MANUAL



PROJECT JOB #: 11RT1050

BREAKER SERIAL #: 999A0459

PROJECT DATE: MAY 2012

OPERATION & SERVICE

4.1. HAMMER SPECIFICATIONS

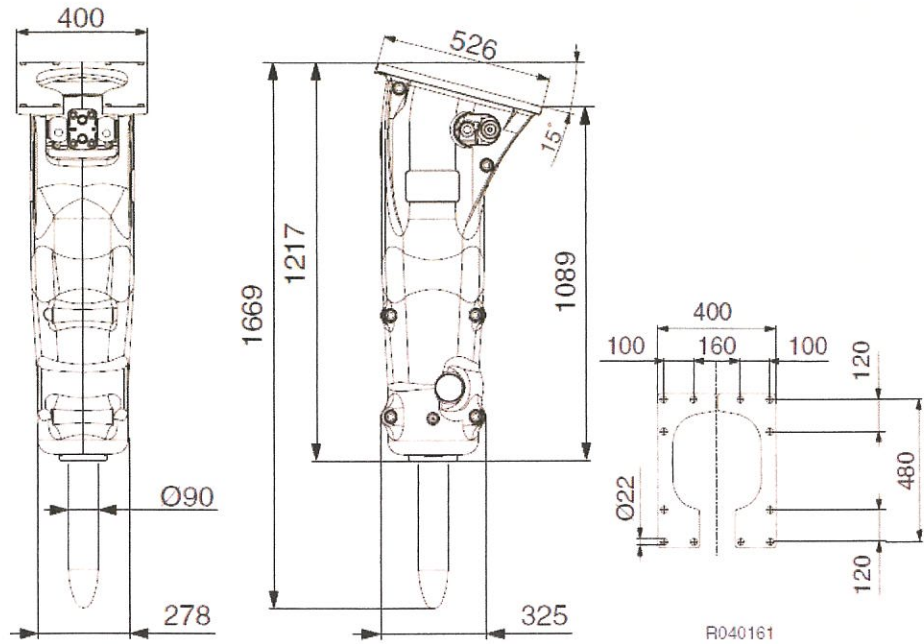
4.1.1 Technical specifications

Item	Specification
Working weight ^a	505 kg (1110 lb)
Impact rate ^b	500...1700 bpm
Operating pressure ^c	75...115 bar (1090...1670 psi)
Pressure relief, min ^d	150...190 bar (2175...2755 psi)
Pressure relief, max	220 bar (3190 psi)
Pressure in LP-circuit	25...27 bar (360...390 psi)
Oil flow range	50...150 l/min (13.2...39.6 gal/min)
Back pressure, max	20 bar (290 psi)
Input power	29 kW (39 hp)
Tool diameter	90 mm (3.54 in)
Pressure line connection (IN)	BSPP-internal 1"
Return line connection (OUT)	BSPP-internal 1"
Pressure line size (minimum inner diameter)	26 mm (1.02 in)
Return line size (minimum inner diameter)	26 mm (1.02 in)
Optimum oil temperature	40...60 °C (104...140 °F)
Allowed oil temperature range	-20...80 °C (-4...176 °F)
Optimum oil viscosity at operating temperature	30...60 cSt
Allowed oil viscosity range	20...1000 cSt
Miniexcavator, tractor backhoe weight, optimum range ^e	6.6...10.6 t (14600...23400 lb)
Miniexcavator, tractor backhoe weight, allowed range ^f	5.8...13.0 t (12800...28700 lb)
Skid steer, robot weight, optimum range ^g	4.4...7.1 t (9700...15700 lb)
Skid steer, robot weight, allowed range ^h	3.9...8.7 t (8600...19200 lb)
Noise level, measured sound power level, LWA ⁱ	123 dB (123 dB)
Noise level, guaranteed sound power level, LWA ^j	127 dB (127 dB)

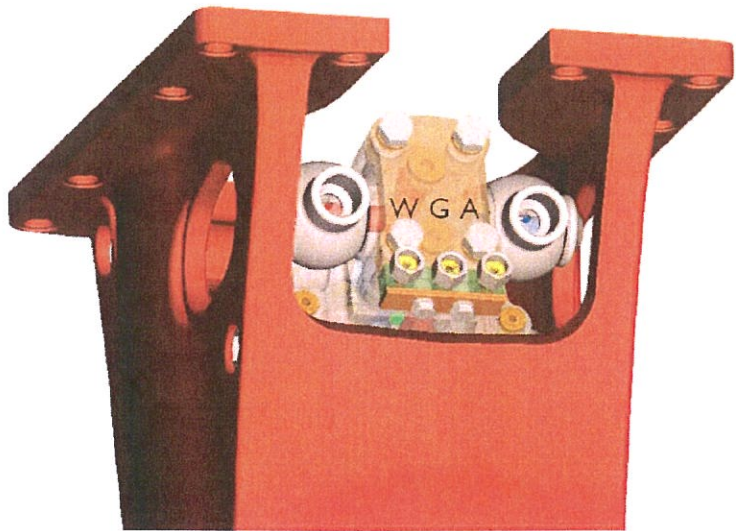
- a. Includes average mounting bracket and standard tool
- b. Actual impact frequency depends on oil flow, oil viscosity, temperature, and material to be broken
- c. Actual pressure depends on oil flow, oil viscosity, temperature, material to be broken and back pressure
- d. Minimum setting = actual operating pressure + 50 bar (730 psi)
- e. Check carrier's lifting capacity from carrier manufacturer
- f. Check carrier's lifting capacity from carrier manufacturer
- g. Check carrier's lifting capacity from carrier manufacturer
- h. Check carrier's lifting capacity from carrier manufacturer
- i. According to European Union DIRECTIVE 2000/14/EC
- j. According to European Union DIRECTIVE 2000/14/EC

OPERATION & SERVICE

4.1.2 Main dimensions



4.1.3 Scaler prototype, grease, water and air connections



Tool	Size
Grease connection (G)	ORFS-female UNF 1 1/16-16
Water connection (W)	ORFS-female UNF 1 1/16-16
Air connection (A)	ORFS-female UNF 1 1/16-16