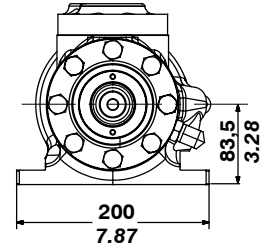
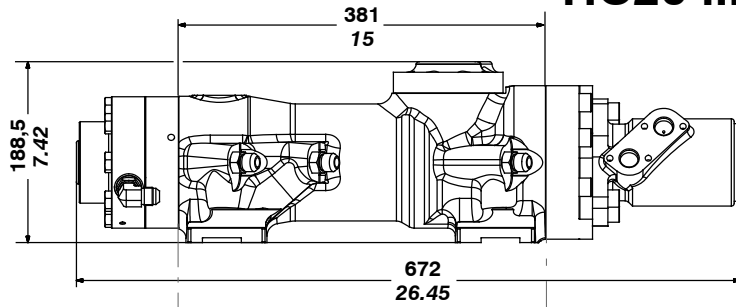
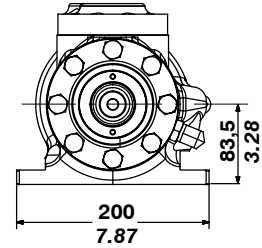
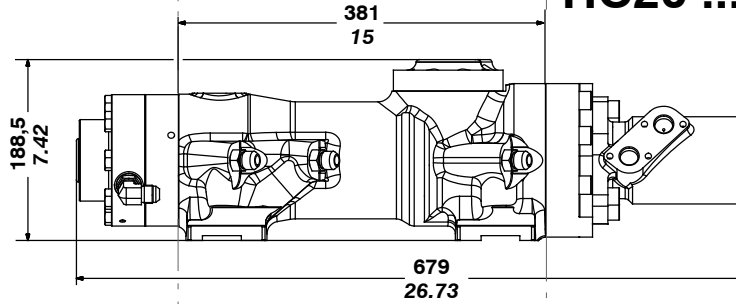


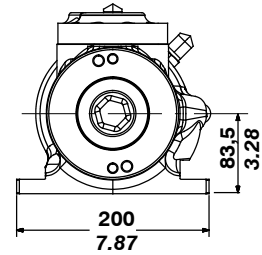
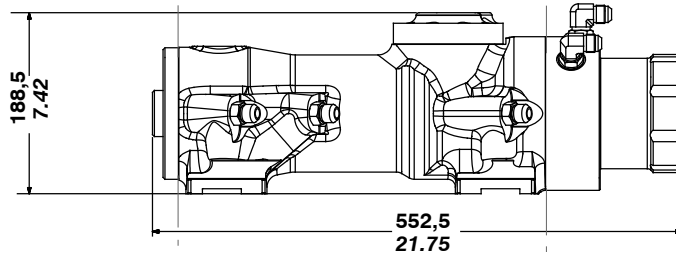
**HC20 ...M050..W..**



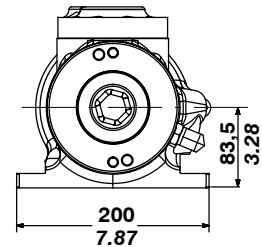
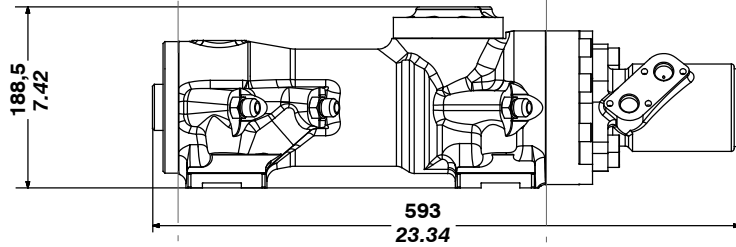
**HC20 ...M100..W..**



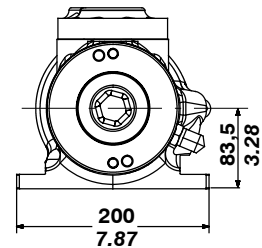
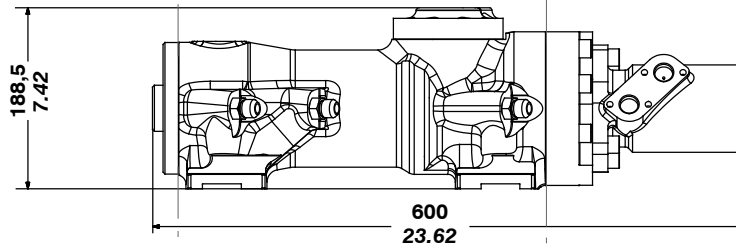
**HC20 ...D067..A..**



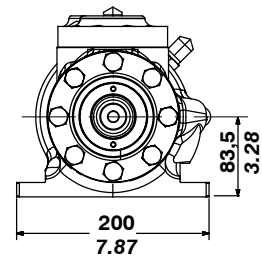
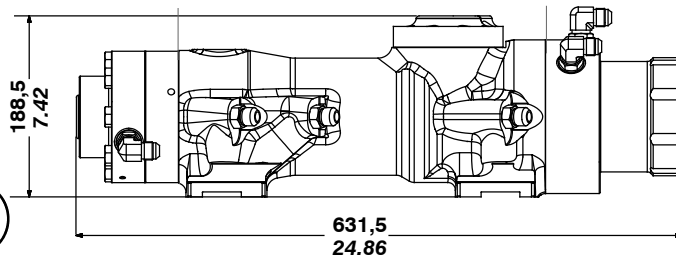
**HC20 ...M050..A..**



**HC20 ...M100..A..**



**HC20 ...D067..W..**



mm  
in.

Strike flow	l/mn	<i>GPM</i>	45			11.9		
Strike pressure maxi	bar	<i>PSI</i>	140			2031		
Strike frequency maxi	Hz	<i>BPM</i>	50			3000		
Energy per blow	J	<i>ft-lb</i>	90			67		
Rotation motor			D-67	M-50	M-100	D-67	M-50	M-100
Rotation flow maxi	l/mn	<i>GPM</i>	30	20	30	7.9	5.3	7.9
Rotation pressure maxi	bar	<i>PSI</i>	140			2031		
Max rotation torque	Nm	<i>ft-lb</i>	150	100	200	110	73	147
Rotation speed setting	t/mn	<i>RPM</i>	150 – 300			150 – 300		
Water flushing pressure	bar	<i>PSI</i>	15			217		
Water flushing flow	l/mn	<i>GPM</i>	30			7.9		
Air flushing pressure	bar	<i>PSI</i>	4 – 10			58 – 145		
Air flushing + dust collector	m3/mn	<i>CFM</i>	2,5			89		
Front guide lubrication pressure	bar	<i>PSI</i>	0,5			8		
Front guide lubrication air flow	l/mn	<i>GPM</i>	200			53		
Rod type	mm	<i>in</i>	H22 – H25 – R25 – R32			H22 – H25 – R25 – R32		