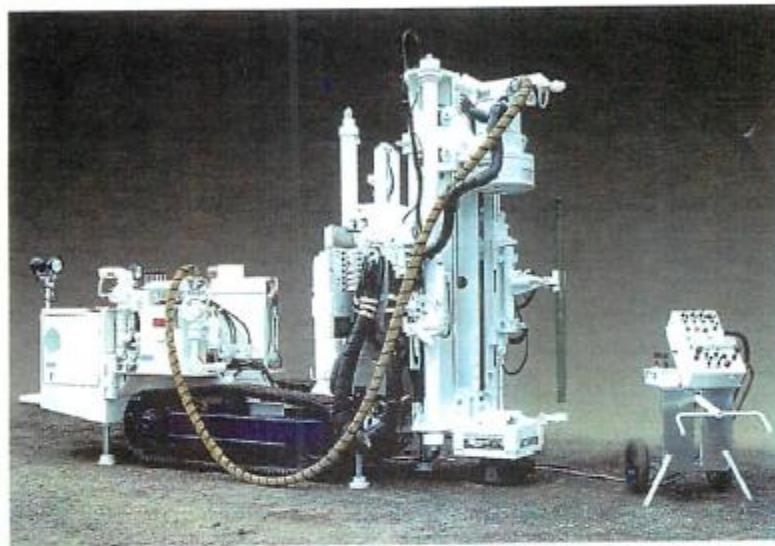

In-the-Hole Production Drills



CD 360M

- ITH production drilling from 3.5 in. (89 mm) to 8.5 in. (216 mm)
- Hole depths to 750 ft. (229 m) x 8in. (203 mm) hole
- 360° tower rotation enables full-circle drilling without repinning
- Hydraulic rod lock, breakout wrench and optional mechanical arm for easy rod changing
- Towers for rod lengths from 4 ft. (1.22 m) to 6 ft. (1.82 m)
- Dual tower stabilizing jacks and hydraulic tower extension
- Hydraulic remote control for all drilling functions
- Electric drill light packages
- High pressure water injection



**MINING TECHNOLOGIES
INTERNATIONAL INC.**

Innovative technologies. Unparalleled support.

General Specifications

Drilling

Hole diameter	3.5 in. (89 mm) to 8.5 in. (216 mm) (ask about larger hole and cluster drill capabilities)
Rod diameter	2.88 in. (73 mm) to 6.5 in. (165 mm)
Rod length	6 ft. (1.83 m) standard, 5 ft. (1.52 m) and 4 ft. (1.22 m) optional
Hole length	750 ft. (229 m) (ask about longer hole capabilities)

Feed

	Gimbal mounted compound feed cylinder
Feed force	18,000 lb. (8,181 kg), optional 30,000 lb. (13,636 kg)

Drive Head

	Direct drive hydraulic motor
Speed	0-39 rpm
Torque	5400 ft.-lb. (7,321 Nm), optional 10,000 ft.-lb. (13,557 Nm) hi-torque head

Mast Position

	Horizontal tram
Tilt	15° forward (45° optional)
Rotation	360°
Side Shift	26 in. (660 mm) total, 13 in. (330 mm) offset from centre

Carrier

Crawler	
Drive	hydraulic motor c/w motion control valves
Brakes	spring applied/hydraulic released on each track
Towing	brake disengage on torque hubs

Hydraulics

Reservoir	21 US gal. (80 L)
Pump	variable displacement piston pump c/w load sense and horsepower control
Filters	suction strainer, 10 micron pressure filter, 10 micron return filter

Dimensions

Tramming	length 12 ft. (3.66 m), width 56 in. (142.2 cm) or optional 48 in. (121.9 cm)
Dry weight	standard 20,500 lb. (9320 kg) with mechanical rod handling 24,000 lb. (10,910 kg) with diesel motor 20,500 lb. (9320 kg)

Air/Water System

Lube Oil	hydraulic driven rock drill oil injection pump c/w sight gauge and volume adjustment
Water	air driven water pump, 4 US gpm (15 L/min.) maximum volume adjustable. Optional electric driven piston pump: 4 US gpm (15 L/min.), 8 US gpm (30 L/min.), or 12 US gpm (45 L/min.)

Electrical

Power	30 hp (23 kw)/3 phase/575V/60Hz standard (ask about larger power options)
Controls	all electrical panels NEMA 4 rated (stainless steel optional), ground fault duplex receptacle

Controls

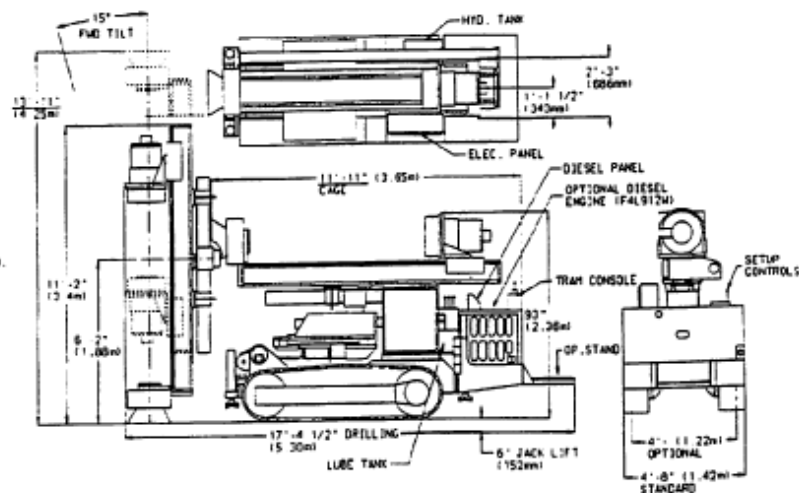
	Hydraulic pilot drill and wrenching
	Electric pilot set-up
	Hydraulic gauges for feed, rotation, air and pilot pressure
	Separate tram console
	Optional electric pilot controls
	Remote control
	Electric umbilical
	Radio remote

Options

	10 in. ² feed cylinder
	High-torque head
	Diesel power pack
	Narrower unit, 4 ft. (1.2 m) wide (electric and diesel)
	Single rod mechanical handler
	20 rod handler for 3.5 in. (89 mm) to 4 in. (102 mm) rods
	14 rod handler for 5.25 in. (133 mm) rods
	On board screw air pressure booster to 350 psi (24 bar)

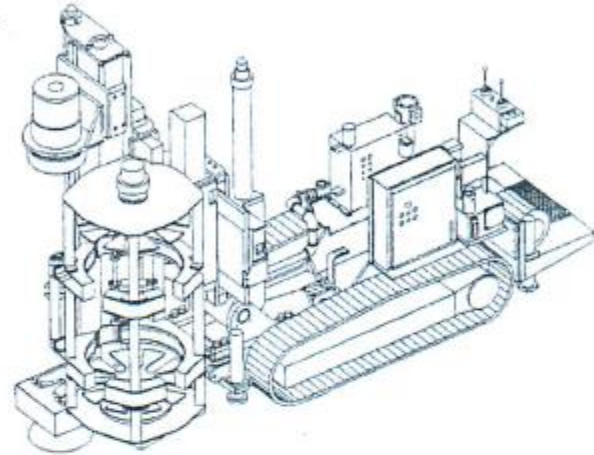
Contact an MTI representative or call our head office to discuss your specific requirements.

All specifications, while accurate at time of publication, are subject to change without notice. Some features shown in photos and illustrations may be optional.



Leading the way in blasthole drilling technology.

The basic CD 360M evolved with cooperation from some of Canada's leading mining operations. This sturdy, stable ITH drill is capable of withstanding the harsh demands of high productivity underground drilling. The modular design permits field upgrades of most options to meet any changing production needs or to exploit opportunities for increased productivity.



Features and Benefits

- Transportable in a 12 ft. by 5 ft. (3.66 m by 1.42 m) cage with 20,000 lb. (9,070 kg) capacity
- Diesel power for tramping and drilling
- Mechanical rod lock and breakout wrench
- Side shift 26 in. (66 cm)
- Four hydraulic levelling jacks
- Carrier and mast stingers
- Positive feed stability with patented gimble cylinder mounting and cam roller slide system
- Load sensing hydraulic system
- Electric hydraulic control capability
- On-board screw booster compressor
- High torque head
- Level to level mobility without ramp access
- Tramping and operating capabilities independent of electricity source
- Operator safety and convenience
- More accurate and effective collaring and hole layout
- Improved set-up accuracy and hole accuracy
- Increased drilling stability and hole accuracy
- Smoother drilling extends component life and improves hole accuracy
- Optimum power distribution and remote drilling
- Automation capability
- Self-contained
- Larger, longer hole capability